

FORCE WITH INTELLIGENT SPEED CONTROL™

5K & 10K ELECTRIC TRAILER DOLLY
VERSION 4.8



READ CAREFULLY
BEFORE OPERATING

IMPROPER USE CAN CAUSE DAMAGE TO
YOUR TRAILER OR PERSONAL INJURY.



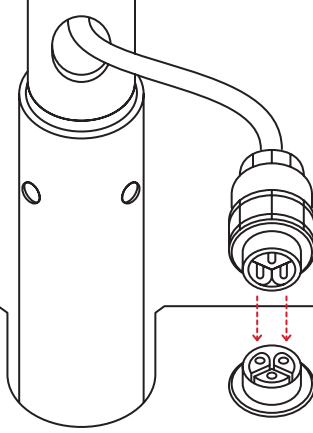
DANGER

MODULE FEATURES

HANDLE PLUG

Plug in and twist locking cap over connection.

Unplug cable while charging the battery.



FORCE
WITH
INTELLIGENT
SPEED CONTROL™



1



2



DANGER: DO NOT EXCEED MAXIMUM WEIGHT CAPACITY OF THIS UNIT! CAN CAUSE DAMAGE TO YOUR TRAILER OR SERIOUS INJURY. REFER TO USER MANUAL BEFORE OPERATION, DO NOT OPERATE ON MORE THAN 6% GRADE. ENSURE UNIT IS STABLE BEFORE OPERATING.



3



CIRCUIT BREAKERS

By default, the Brake Button protrudes more than the Motor.

BATTERY CHARGER

4

To charge the **U1 Battery**, ensure that the dolly is **ON** by plugging in the **battery cable**. Connect the **charger cable** to the dolly's figure eight port, then plug the opposite end into a nearby wall outlet.



The **Battery Charger Display** on the right side of the dolly will illuminate.

1 ISC CONTROL™

While parking your trailer, switch between High or Low Speed anytime by flipping the toggle switch.

Motor speed starts and stops gradually for better traction and a smoother parking experience.

3 CIRCUIT BREAKERS

Prevents Motor and Smart Brake from overheating.

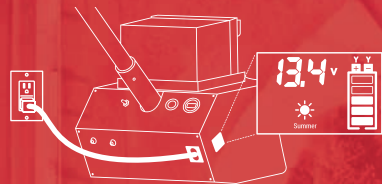
If a breaker trips, the Reset Button will extend up to 1/2" from the panel.

Allow 30 seconds for the system to cool down, then press Reset.

2 VOLT METER

Displays the Battery Voltage while the dolly is in use. Fully charged batteries rest between 12.2 to 13V.

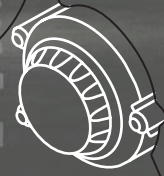
4 BATTERY CHARGER DISPLAY



While charging, this screen displays the **Charging Voltage and Amperage**.

Disconnect the charger after an over-night charge to extend battery life.

MOTOR KNOB: SWITCHING GEARS

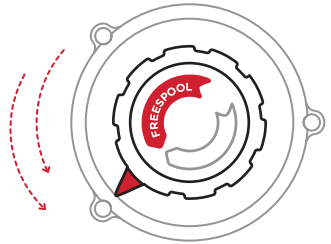


FREEWHEEL/SPOOL

NEUTRAL. MOVE THE DOLLY WITHOUT POWER WHILE IT IS NOT UNDER LOAD.

Turn the knob in the direction of the Freespool arrow until it stops. Freely move the dolly to and from the trailer in this mode.

This mode is intended for transportation only.



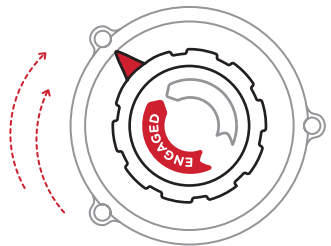
DRIVE

ENGAGE THE MOTOR TO CONNECT TO THE TRAILER AND PARK WITH POWER.

Ensure the Dolly is in parking position underneath the trailer's coupler.

Turn the knob in the direction of the Engaged arrow until it stops and clicks into position. Rock the Dolly back and forth to ensure the motor is engaged.

When pushed manually in this mode, the Dolly will only move an inch forwards or backwards before stopping.





DANGER

DO NOT EXCEED DOLLY'S MAX. WEIGHT CAPACITY

CAN CAUSE DAMAGE TO YOUR TRAILER OR PERSONAL INJURY.

FORCE 5K

5,000 LBS GVWR

900 LBS TONGUE WEIGHT

FORCE 10K

10,000 LBS GVWR

900 LBS TONGUE WEIGHT

RE-TIGHTEN BALL MOUNT BEFORE OPERATION

OPERATING WITH A LOOSE OR UNEVEN CONNECTION CAN
CAUSE DAMAGE TO YOUR TRAILER OR PERSONAL INJURY.

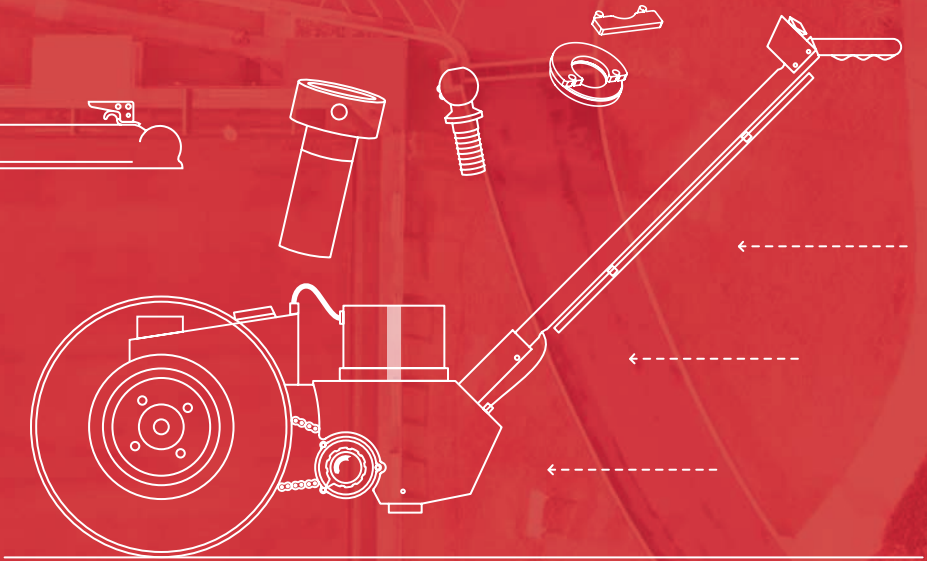
DO NOT OPERATE ON MORE THAN 6% GRADE

RISK OF RUNAWAY TRAILER. DO NOT OPERATE
ON STEEP INCLINES.

CONNECTING TO YOUR TRAILER:

BALL MOUNT ADAPTER

While in **Freewheel Mode**, move the Dolly and Accessories to the Trailer. Choose your preferred **Hitch Ball Size**, and assemble the **Ball Mount**.

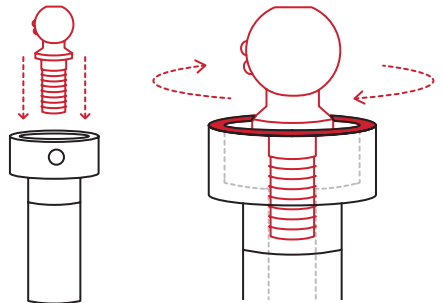


BALL MOUNT ASSEMBLY

HITCH BALL

Thread desired **Hitch Ball** into the Ball Mount. Apply a generous portion of **All-Purpose Grease** along the top surface of the **Ball Mount Collar**.

The shoulder of the Hitch Ball should rest slightly above the top of the collar.

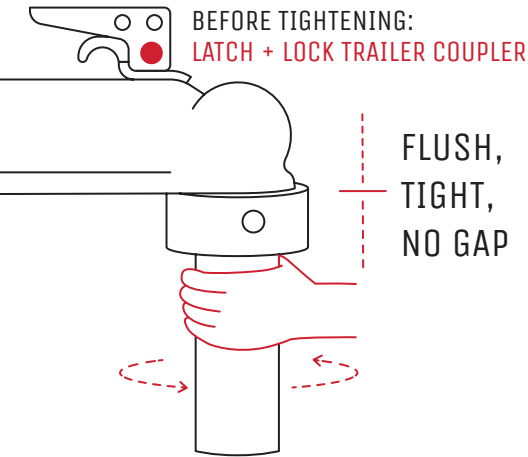
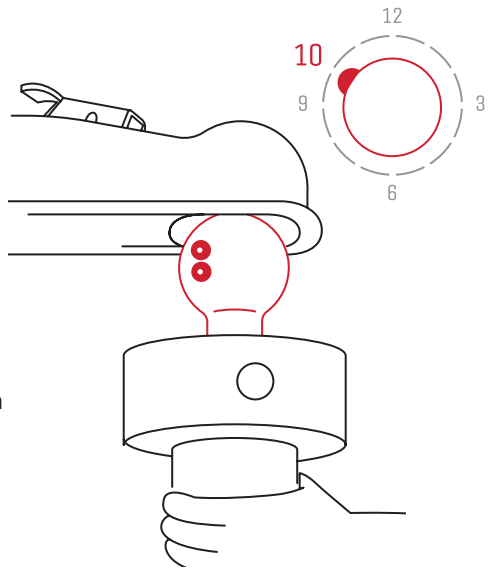


HITCH BALL PLACEMENT

WELD SPOTS

Insert the assembled Ball Mount into the trailer coupler and latch it down.

Make sure the **weld spots** on the hitch ball are pointed towards the **left side of your trailer at 10 o'clock**.



COUPLER CONNECTION

Turn the Ball Mount **counterclockwise** until the gap between the Ball Mount collar and trailer tongue closes **tightly**.

With the trailer coupler latched down, insert the **latch pin** to secure it.

Your trailer's Latch and Pin style will vary depending on your coupler:

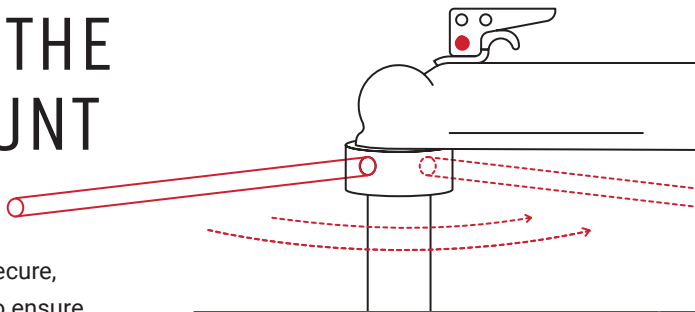


TIGHTEN THE BALL MOUNT

TIGHTENING BAR

Once the Ball Mount is secure, use the **Tightening Bar** to ensure the connection is **as tight as possible!**

This will take a few rotations.



Have an obstruction or gap preventing a flush connection?

SEE PAGE 9



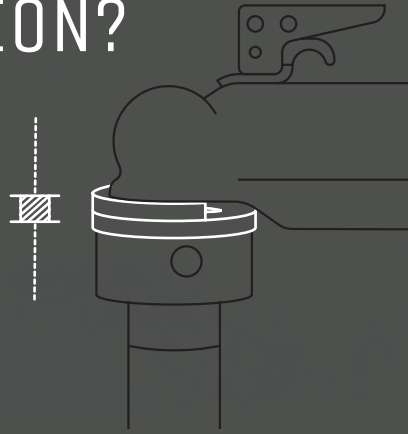
UNEVEN CONNECTION?

THRUST WASHER

Have an obstruction preventing a flat connection?

Place the **Thrust Washer** on top of the Ball Mount with the **open section facing the trailer**.

While hand-tightening the Ball Mount, hold the Thrust Washer in place to prevent it from spinning.



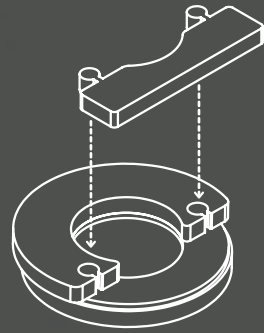
CONNECTION GAP?

THRUST WASHER WITH PUZZLE PIECE

Space between the Ball Mount and Coupler?

Install the **Thrust Washer** on top of the Ball Mount with the **Puzzle Piece** inserted.

Tighten Ball Mount as normal.

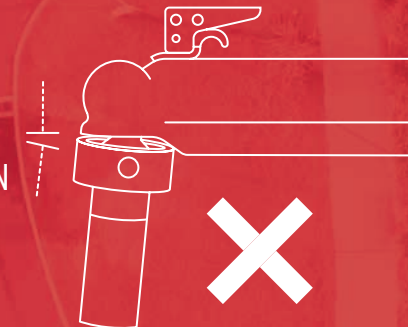


STILL HAVING TROUBLE?

SEE ALTERNATIVE CONNECTIONS (PAGE 13)

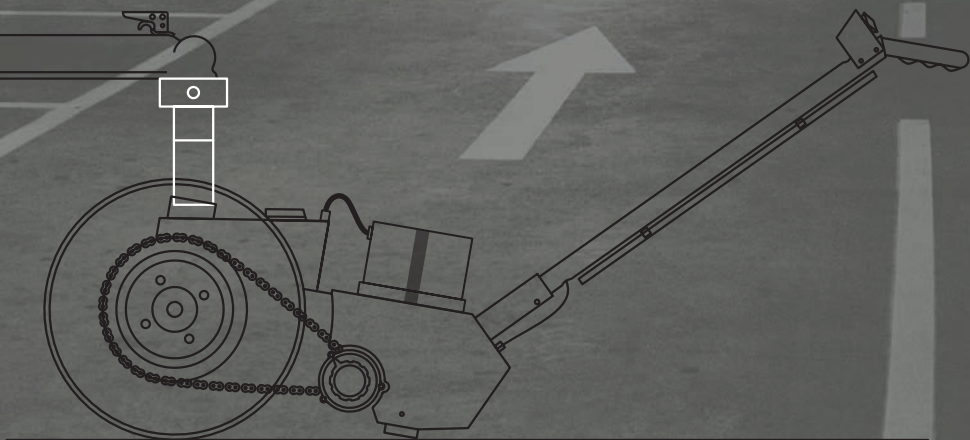
⚠️ DANGER

OPERATING WITH A LOOSE OR UNEVEN CONNECTION CAN CAUSE DAMAGE TO YOUR TRAILER OR PERSONAL INJURY.



ALIGN THE DOLLY

Wheel the dolly underneath the **Ball Mount**. Lower the trailer to drop the **Ball Mount** into the **Receiver Tube** until there is no gap.



ENGAGE MOTOR INTO DRIVE

CONNECT BATTERY

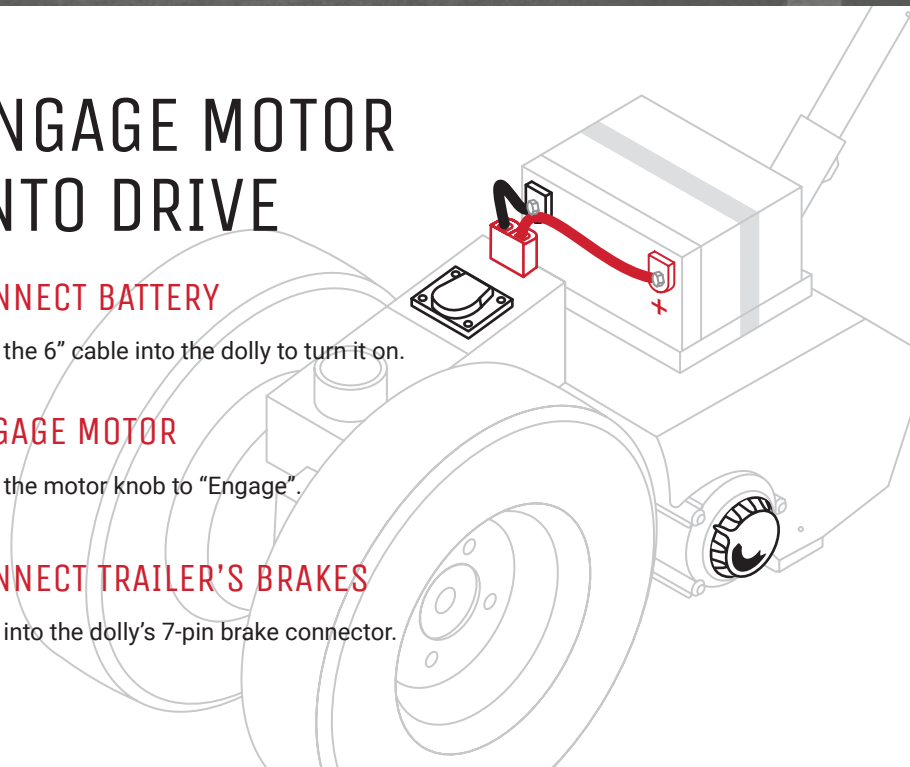
Plug the 6" cable into the dolly to turn it on.

ENGAGE MOTOR

Turn the motor knob to "Engage".

CONNECT TRAILER'S BRAKES

Plug into the dolly's 7-pin brake connector.

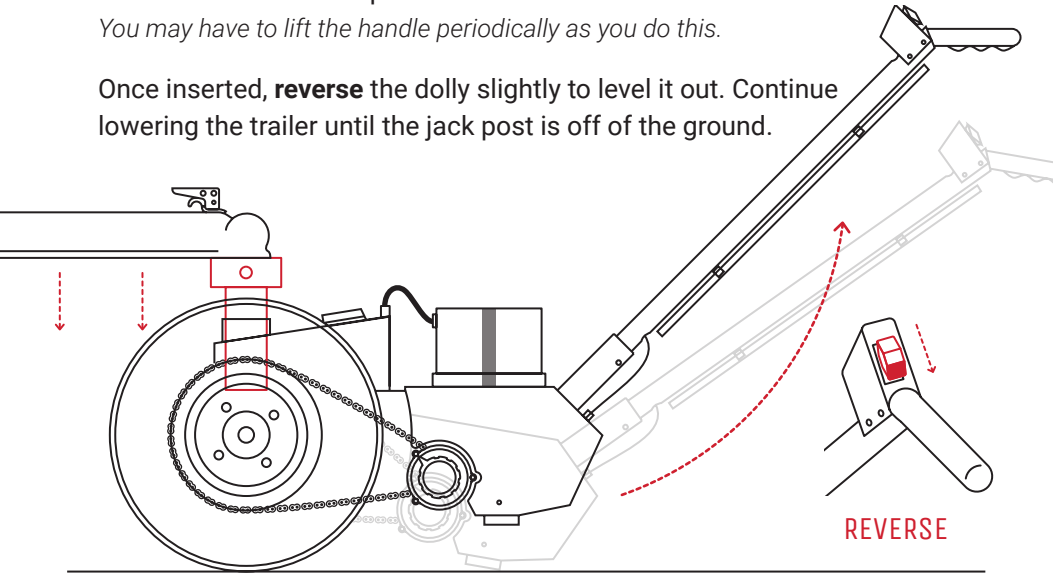


INSERT BALL MOUNT

Lower the trailer to drop the Ball Mount into the **Receiver Tube**.

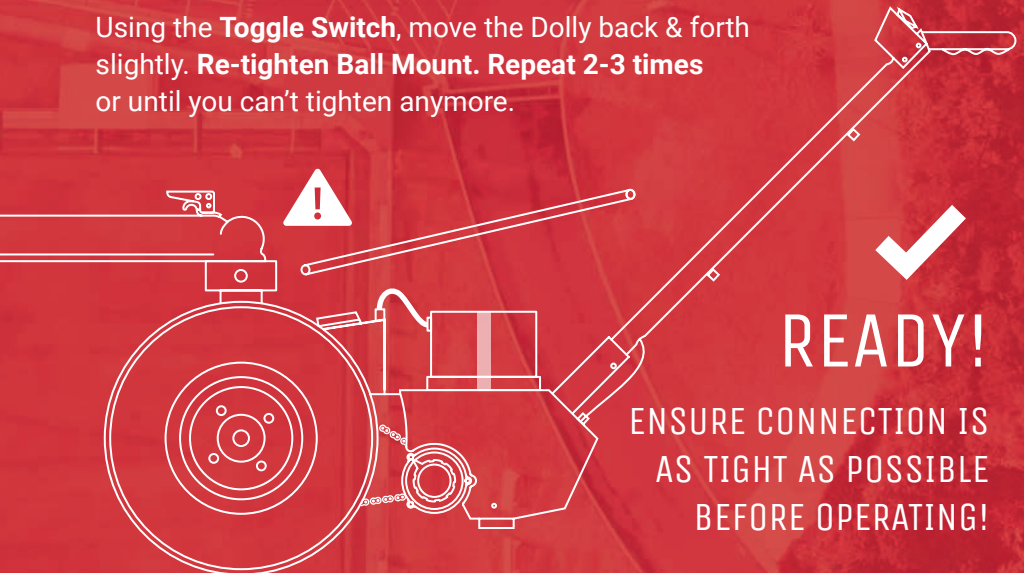
You may have to lift the handle periodically as you do this.

Once inserted, **reverse** the dolly slightly to level it out. Continue lowering the trailer until the jack post is off of the ground.



RE-TIGHTEN BALL MOUNT

Using the **Toggle Switch**, move the Dolly back & forth slightly. **Re-tighten Ball Mount**. Repeat 2-3 times or until you can't tighten anymore.



PARKING YOUR TRAILER

Use the **Forward** and **Reverse** Toggle Switch to steer into tight spaces that are nearly impossible for vehicles.

Switch between **High** or **Low Speed** anytime using the **Intelligent Speed Control** Switch.



DISCONNECTING FROM TRAILER COUPLER

Chock Trailer Wheels to prevent a runaway trailer.

Unplug the Battery Cable from the dolly. **Raise the Trailer** to withdraw the **Ball Mount**, then switch the dolly to **Freewheel Mode**.

The Ball Mount can be removed or left on the hitch for later use.

STORAGE & MAINTENANCE

Freewheel the dolly to desired storage area, preferably under cover. Top up the tire pressure to a maximum of **40 PSI** as needed.

Charging the Battery: Following the instructions on page 3, fully charge the battery every 2-3 months. While in storage, disconnect the battery and handle cable from the dolly to prevent battery drain.

Grease the Receiver Tube and **Lubricate the Chain** with **Chain Lube**. Can be done annually, or more often if used more frequently.

CALL TOLL-FREE:
1-888-926-5517
sales@parkit360.com

OFFICE HOURS:
WEEKDAYS 8:30AM - 5PM EST
support@parkit360.com



DANGER

DO NOT EXCEED DOLLY'S
MAX. WEIGHT CAPACITY

RE-TIGHTEN BALL MOUNT
BEFORE OPERATION

DO NOT OPERATE ON MORE
THAN A 6% GRADE



Parkit360°

PARKIT360 INC.

130 Industrial Ave, Unit 600

Carleton Place, ON K7C 3T2 Canada

1-888-926-5517 or Parkit360.ca