



MOVIE SCREEN INSTRUCTIONS

⚠ WARNING: READ AND UNDERSTAND ALL INSTRUCTIONS.

Failure to follow all instructions listed below, may result in electric shock, fire and/or serious personal injury.

⚠ WARNING: Not recommended for children under 3 years of age. As with all electric products, precautions should be observed during handling and use to prevent electric shock.

IMPORTANT SAFETY INSTRUCTIONS

READ AND FOLLOW ALL SAFETY INSTRUCTIONS.

When Using Electrical Products, Basic Precautions Should Always Be Followed, Including The Following:

1. This is an electrical product - not a toy! To avoid risk of fire, burns, personal injury, and electric shock, it should not be played with or placed where small children can reach it.
2. Do not use seasonal products outdoors unless marked suitable for indoor and outdoor use. When products are used in outdoor applications, connect the product to a Ground Fault Circuit Interrupting (GFCI) outlet. If one is not provided, contact a qualified electrician for proper installation.
3. This seasonal use product is not intended for permanent installation or use.
4. Do not mount or place near gas or electric heaters, fireplaces, candles, or other similar sources of heat.
5. Do not secure product wiring with staples or nails or place on sharp hooks or nails.
6. Do not let lamps rest on the supply cord or on any wire.
7. Unplug the product when leaving the house, when retiring for the night, or if left unattended.
8. Do not use this product for other than its intended purpose.
9. Do not hang ornaments or other objects from cord, wire, or light string.
10. Do not close doors or windows on the product, or extension cords, as this may damage the wire insulation.
11. Do not cover the product with a cloth, paper, or any material not part of the product when in use.
12. Do not place the product against carpeting, furniture, or any other fabric when in use.
13. This product has a polarized plug (one blade is wider than the other) as a feature to reduce the risk of electric shock. This plug will fit in a polarized outlet only one way. If the plug does not fit fully in the outlet, reverse the plug. If the plug still does not fit, contact a qualified electrician. Do not use an extension cord unless the plug can be fully inserted. Do not alter or replace the plug.
14. This product employs overload protection (fuse). A blown fuse indicates an overload or a short-circuit condition. If the fuse blows, unplug the product from the outlet. Also unplug any additional string or products that may be attached to the product. Replace the fuse as per the user servicing instructions (follow product markings for proper fuse rating) and check the product. If replacement fuse blows, a short-circuit may be present and the product should be discarded.
15. Before using and reusing, inspect the product carefully. Discard any products that have cut, damaged or frayed wire insulation cords, cracks, lamp holders or enclosures, loose connections, or exposed copper wire.
16. Read and follow all instructions that are on the product or provided with the product.

SAVE THESE INSTRUCTIONS

USE AND CARE INSTRUCTIONS

1. Before using and reusing, inspect the product carefully. Discard any products that have cut, damaged or frayed wire insulation cords, cracks, lamp holders or enclosures, loose connection, or exposed copper wire.
2. When storing the product, carefully remove the product from wherever it is placed, including trees, branches, or bushes, to avoid any undue strain or stress on the product conductors, connections and wires.
3. When not in use, store neatly in a cool, dry location protected from sunlight.



MOVIE SCREEN INSTRUCTIONS

Congratulations! You're the proud owner of a Gemmy Airblown® Inflatable Movie Screen™. Please read over the directions carefully before using your Gemmy Airblown® Inflatable Movie Screen.

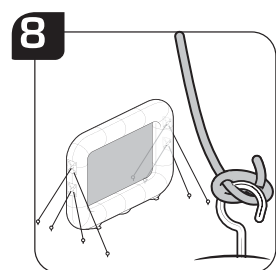
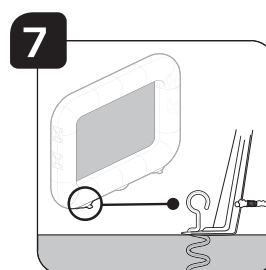
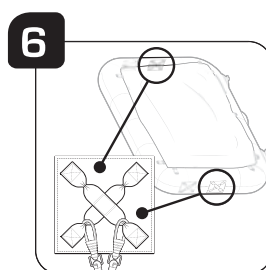
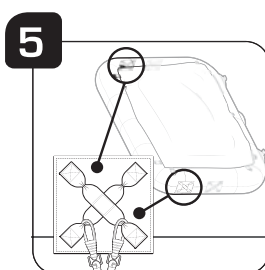
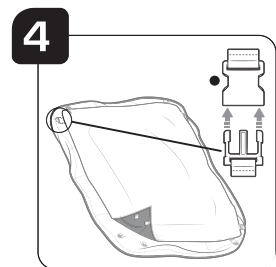
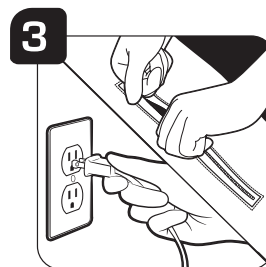
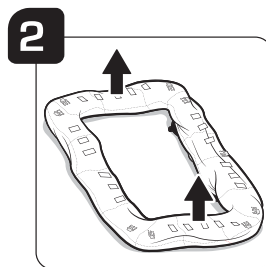
Questions? Visit us at WWW.GEMMY.COM or E-mail us at general@gemmy.com or contact Gemmy at 1-800-231-6879 X444, Monday – Friday 8:30 am – 5:30 pm CST.

CONTENTS

Airblown® Inflatable Frame	1 piece
Movie Screen™	1 piece
Tether Stakes	8 pieces
Base Stakes	8 pieces
Nylon Tethers (4 short; 4 long)	8 pieces
Storage Bag	1 piece
Spare Fuse (5Amp, 125V)	1 piece

GENERAL INSTRUCTIONS

1. Remove contents from packaging and lay out deflated Airblown® Inflatable Movie Screen™ in a clear, flat area free of low overhangs, such as trees, eaves or anything else that could puncture or damage your Airblown® Inflatable. (See illustration 1).
2. Ensure that your Airblown® Inflatable Frame is lying so that the side with the plastic clips is facing up. (See illustration 2).
3. While item is still lying flat, plug power cord into receptacle or other outlet device to inflate your Airblown® Inflatable Movie Screen™. This process may take a few minutes. Make sure the air intake is clear of fabric or other obstruction and zipper is fully closed. (See illustration 3).
4. Attach Movie Screen™ to frame by connecting the clips along the edges and corners of the Movie Screen™. Locate the four metal legs on the bottom of the frame and unfold them completely. (See illustration 4).
5. Attach 2 long nylon tethers to the upper "X"-shaped nylon strap on each side of the Airblown® Inflatable Movie Screen™. (See illustration 5).
6. Attach 2 short nylon tethers to the lower "X"-shaped nylon strap on each side of the Airblown® Inflatable Movie Screen™. (See illustration 6).
7. Stand the Airblown® Inflatable Movie Screen™ upright, ensuring that fans are located on the bottom. Locate the 8 small Base Stakes and screw them into the ground through the provided holes in each leg of the stands. (See illustration 7)
8. Insert the 8 tether stakes into ground and attach clips from nylon tethers to tether stakes, as shown. (See illustration 8)





MOVIE SCREEN INSTRUCTIONS

USER SERVICING INSTRUCTIONS

Fuse Replacement

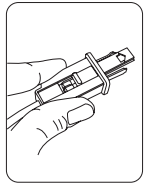


WARNING: Risk of Fire: Replace fuse only with 5 Amp, 125V fuse (provided with product).



WARNING: Risk of Fire: Do not replace the attachment plug. Contains a safety device (fuse) that should not be removed. Discard product if attachment plug is damaged.

1. Grasp plug and remove from the receptacle or other outlet device. Do not unplug by pulling on the cord.
2. Open fuse cover. Slide open the fuse access cover on top of the attachment plug towards blades.
3. Remove fuse carefully.
4. Close the fuse cover. Slide closed the fuse access cover on top of the attachment plug.



WARNING

Do not attempt to inflate your Airblown® Inflation Movie Screen™ during unusually strong winds. If it becomes too windy for safe operation, simply allow your Airblown® Inflation Movie Screen™ to deflate and wait for better conditions before re-inflating.

WARNING

Protect the electric fan and power cord from direct exposure to water. This precaution will reduce the risk of electrical shock. When the temperature is below 10°F (-14°C), the motor may temporarily stop running. The motor will begin functioning again higher temperatures.

WARNING

Remove all plastic fasteners and tags. These are part of the packaging and short be discarded.

WARNING: This product contains chemicals, including lead, known to the State of California to cause cancer, and birth defects or other reproductive harm. **Wash hands after handling.**

This item is not a toy and should be used for decorative purposes only.

TROUBLE SHOOTING CHECKLIST

If your Airblown® Inflation Movie Screen™ is not inflating, the problem may be:

1. The power source is disabled or the cord may be unplugged.
2. Debris may be lodged in the motor.
3. The zippers may not be securely closed, sealing the Airblown® Inflation Movie Screen™.
4. Your item is ripped or torn. Please inspect your Airblown® Inflation Movie Screen™ carefully for rips or tears.

FREQUENTLY ASKED QUESTIONS (FAQ's)

NOTE: ONCE FAN IS UNPLUGGED AND STOPS BLOWING, YOUR Airblown® Inflation Movie Screen™ WILL DEFLATE.

1. What are the ideal conditions to use my Airblown® Inflation Movie Screen™?

The Airblown® Inflation Movie Screen™ is designed for nighttime viewing. The brightness of your image will vary with the type of projector you use. We recommend you set up your Movie Screen™ in as dark of an area as possible (away from street lights and porch lights), and refer to your projector's instruction manual for ideal projector placement.

2. What happens if my Airblown® Inflation Movie Screen™ becomes torn?

Rips in the Airblown® Inflation Movie Screen™ can be sewn by hand (no special thread is required) or taped with clear packing tape. Note: if the screen itself becomes torn, it is recommended that it be sewn or taped on the backside to reduce visible damages and reflection from projectors.



MOVIE SCREEN INSTRUCTIONS

FREQUENTLY ASKED QUESTIONS (FAQ's) (cont.)

3. How can I clean my Airblown® Inflatables Movie Screen™?

Wipe clean with a damp cloth and allow to dry before storing away. Use mild detergent if necessary.

4. When I unplug my Airblown® Inflatables Movie Screen™, it deflates. Why is this?

Your Airblown® Inflatables Movie Screen™ will not stay inflated unless it is plugged in and the fan is blowing air.

5. How much electricity does an Airblown® Inflatables Movie Screen™ consume?

It uses about as much energy as a few standard strings of Holiday Lights.

6. What is the best way to store my Movie Screen™?

Store in the included storage bag and keep in a cool, dry location.

7. My area is prone to unusually windy conditions, will this affect my Movie Screen™?

In order to prevent damage, we suggest you keep the Movie Screen™ protected from high winds.

8. My Movie Screen™ fully-inflates, but will not stand up properly. What can I do?

Please reference the General Instructions section of this manual for step-by-step instructions and illustrations on how to properly stake and secure your Movie Screen™ so that it will be correctly displayed.

9. There are wrinkles in my Movie Screen™. What should I do?

We recommend that either you allow your screen to hang up, or that you simply inflate your Airblown® Inflatables Movie Screen™ for a period of time before projecting images onto the screen. Any wrinkles should fall out naturally after a short while.

10. The screen is wrinkled—will this affect the quality of the picture?

Some wrinkling may occur as a result of folding your screen. However, the wrinkles will NOT affect the image on the screen as they are not noticeable in darker environments. Make sure the screen is firmly attached to all of the clips on the frame as this will allow for a more even surface for the projection.

These instructions are for items number 39110-32, 39111-32, 39112-31, 39113-33 and 39121-32.

Gemmy makes more fun and festive products than you can imagine...
Check out our web site at WWW.GEMMY.COM to see for yourself!

STILL NEED HELP?

BEFORE YOU RETURN THE ITEM TO THE STORE

Visit WWW.GEMMY.COM for instructional videos and new FAQs.

Please Call Gemmy's customer support hotline:
1-800-231-6879 X444 or
e-mail us at general@gemmy.com

