

What To Know Before You Rent



FULLY ENGAGE ALL THREADED PARTS

- You must fully engage all threads on Compression Points and Extension Shafts to avoid damaging the tool while driving it through the substrate.
- You will be liable for any damage caused by not fully engaging all threads on Compression Points and Extension Shafts.

KNOW YOUR SOIL CONDITION

- Using a powerful pneumatic or electric driver such as a jackhammer in extreme soil conditions; such as soil compaction great than 95%; soil with very extreme or massive obstacles; or both, can stress the tool to the point of failure.
- Please use common sense and take great care to ensure that your soil does have some compression capability and that soil debris or obstacles are not of an extreme nature.
- In conditions where soil has little or no compaction you must make sure that you drive the tool far enough below the hardscape to avoiding cracking it.

KNOW YOUR PARTS

- Be sure to understand the proper tool configuration and use of driving device for your particular application.
- If you're renting a Pro Pak Accessory Case, be sure to understand each piece in the kit and how to use it. (Refer to Pro Pak Case Layout sheet.)

KNOW YOUR SAFETY PRECAUTION

- Read and follow all safety precautions before using the tool system and driving devices.

CLEAN TOOL BEFORE RETURNING

- Please clean debris from tool surface and threaded parts before returning tool.

Bullet Mole Instructions



**ALWAYS SCREW IN ALL
PARTS ALL THE WAY**

Fast Start Installation

Step 1 – Prepare Entrance and Exit Trenches:

- The entrance must be 2 ft to 3 ft longer than the longest assembled shaft being used.
- Trench depth varies with application (Typ. 12" to 18"). Trench Bottom must be level.
- Size exit trench as needed.

Step 1a – Prepare Pipe & Tool (*Only when installing pipe while driving the tool*)

- Cut pipe to desired length, but no greater than the inside dimension of the shaft being used.
- Slide pipe onto the shaft and attach the compression point and the impact cap.

Step 2 – Drive Tool

- Place the assembled tool 4" to 6" from the bottom of trench using the sled guide or other support.
- Once in place, drive the tool using a sledge-hammer or other driving device.

Step 3 – Remove Tool from the Pipe:

- After penetrating into the exit trench, unscrew the point and slide the shaft back out leaving the pipe in place.
- Complete your installation and backfill the trenches.

Additional Steps for Driveways

Step 4 Add extensions:

- Once the full length of the first shaft is driven into the ground, add an extension shaft to continue the installation.
- Continue driving the tool and adding the required extensions to span the required distance.

OPTION #1 - USING PULL CONNECTOR PULL, PIPE AFTER DRIVING THE TOOL

Once the tool exits out the other side, remove the point,

- Once the tool exits out the other side remove the point,
- Assemble the pipe to be installed across the entire distance of span.
- Attach the proper pull connector 1¼" pipe, use a 1" Plus Compression Point

Attach the pipe and pull back:

- Attach the fully assembled pipe to the pull connector and pull the entire length back through the hole.
- Remove each extension one by one as you pull the pipe back.
- Once the pipe is in place, complete the connections on each end before backfilling trenches.

OPTION #2 - INSTALLING PIPE WHILE DRIVING THE TOOL ADD PIPE LENGTH WITH EXTENSIONS

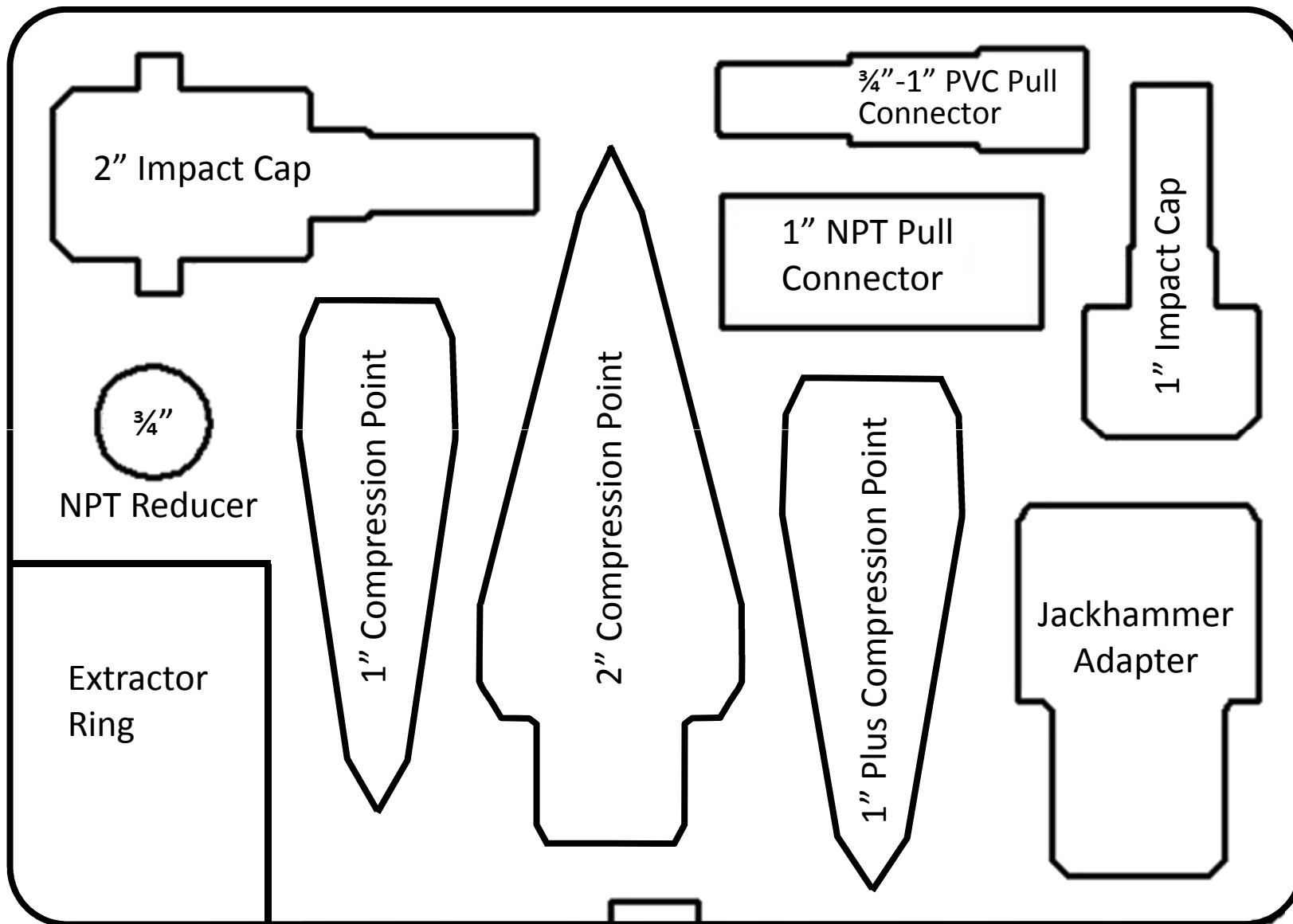
RECOMMENDATION - Drive 1¼" & 2" pipe with greater ease by connecting length as you go.

1. Use 1" Plus (for 1¼" or 1½" pipe) and 1" Impact Cap or 2" Compression Point and Impact Cap (for 2" pipe).
2. After driving the first pipe:
 - Remove the impact cap,
 - Attach an extension shaft with the next pre-cut pipe section and PVC coupling.
 - With a suitable PVC connector, make the connection to the previous pipe.
 - Replace Impact Cap and continue driving the next section of pipe.
 - Repeat as required.



Pro Pak Tool Layout

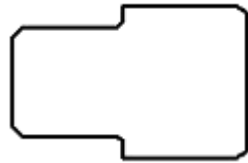
See reverse side for configuration options





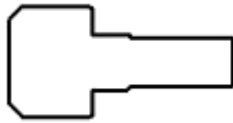
Bullet Mole Tool Configurations

Jackhammer Adapter



- Accepts a standard hex pin of most Jackhammers (not included in Pro Pak)

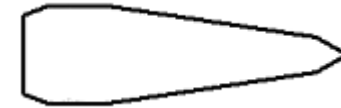
1" Impact Cap



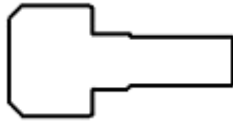
Used to install $\frac{3}{4}$ " & 1" pipe after driving the tool

- Screw in all threads of shaft into Compression Point
- Insert Impact Cap into female end of shaft
- Note: New Impact Caps have a tight tolerance which may require tapping out with a hammer

1" Compression Point



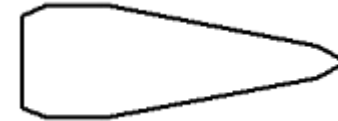
1" Impact Cap



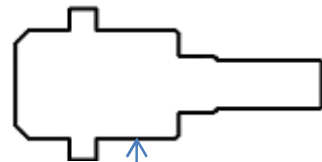
Used to install $1\frac{1}{4}$ " & $1\frac{1}{2}$ " pipe as you drive the tool

- Screw in all threads of shaft into Compression Point
- Cut and insert first pipe length over shaft
- Insert Impact Cap into female end of shaft
- Remove Impact Cap, screw on shaft and glue additional pipe length using couplers over shaft
- Re-insert Impact Cap and drive tool (repeat as required)
- Note: New Impact Caps have a tight tolerance which may require tapping out with a hammer

1" Plus Compression Point



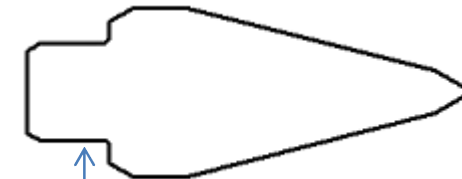
2" Impact Cap



Used to install 2" pipe as you drive the tool

- Screw in all threads of shaft into Compression Point
- Cut and insert first pipe length over shaft onto rest areas
- Insert Impact Cap into female end of shaft
- Remove Impact Cap, screw on shaft and glue additional pipe length using couplings over shaft
- Re-insert Impact Cap and drive tool (repeat as required)
- Note: New Impact Caps have a tight tolerance which may require tapping out with a hammer

2" Compression Point



Pipe rest area

Pipe rest area

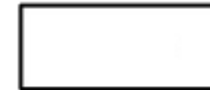
Extractor Ring



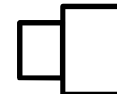
Used to pull back NPT pipe after making hole

- Remove point and cap
- Secure NPT pull connector to pipe first then to shaft
- Fully engage all threads of extractor ring.
- Use pry bar if necessary to pull back pipe (not included)

1" NPT Pull Connector



$\frac{3}{4}$ " NPT Reducer



Extractor Ring



Used to pull back PVC pipe after making hole

- Remove point and cap
- Secure PVC pull connector to pipe first then to shaft
- Fully engage all threads of extractor ring
- Use pry bar if necessary to pull back pipe (not included)

$\frac{3}{4}$ "-1" PVC Pull Connector

